

## SMART – Product Factsheet



### Stores Manufacturing and Asset Recording Tool

**SMART** supports collaborative working by giving a single point of interaction for the whole team to records the flow of objects, materials and work done throughout the business.

#### Object Control

- ▶ Control Stock
- ▶ Manage Assets
- ▶ Manage clients' assets during work (eg sent for service or repair)

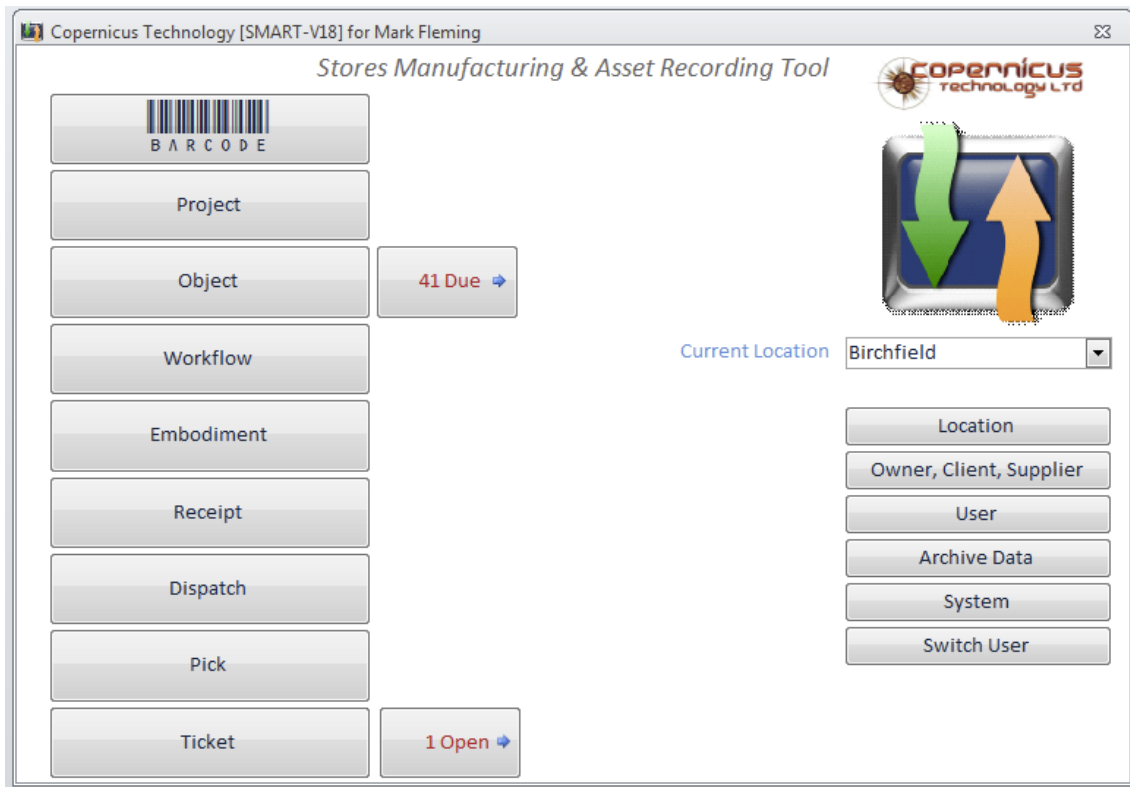
#### Workflow Management

- ▶ Manage and assign team or individual work during projects
- ▶ Record Work carried out, including time taken and objects or materials used or consumed in the process



## General Features

The example **SMART** home screen below shows the major functions on the left, and administration or support functions on the right. Only functions the current user is authorised to use are made available when they log in. In the above example the user has 41 'objects' requiring action and one assigned task under 'Tickets'.



- ▶ **SMART** can be tailored to the size and shape of your business by supporting distributed teams and users across multiple sites
- ▶ Track objects on arrival, through storage, use and delivery
- ▶ **SMART** can also be tailored with relevant user permissions, giving authority to access specific aspects of the overall system
- ▶ Summary windows have search capability, with flexible display options to sort, size and hide columns
- ▶ Documents, schematic drawings, images or any other type of computer file can be 'attached' to objects and projects and viewed by all users
- ▶ **SMART** server can be installed on existing hardware. The server can operate in Windows, Linux or Mac Operating systems using virtualisation technology
- ▶ **SMART** can be extended to have a web-based portal for remote access by staff on the move



# Object Control

**Type and Specific ID Barcodes**

**Stock Location and Qty**

**Handling characteristics and expiry dates**

**Attach any computer file to this object for reference**

- ▶ Track objects on arrival, through storage, use and delivery
- ▶ Objects can be hardware or software
- ▶ Each object records its own history
- ▶ Objects can be specifically identified (eg serial numbered) or collective (eg nuts and bolts)
- ▶ Barcodes can be printed and scanned for quick object identification
- ▶ Objects can be stored across multiple locations
- ▶ Storage locations can be as detailed as required (eg Site, Building, Room, Rack, Shelf, Bin)
- ▶ Objects can have multiple expiry dates (eg Calibration, PAT)
- ▶ Objects out of date are highlighted to the user, along with the reason Objects may 'belong' to a client project and can be tracked separately
- ▶ Objects can be embodied into other objects during manufacturing – produce a bill of materials
- ▶ Objects consumed during work steps automatically reduce held quantity
- ▶ Objects of the same type will be recorded differently if they are from a different source or are for a different purpose (eg objects for a specific project or from different batches will be recorded separately)



# Workflow Management

## Workflow

- ▶ Work steps can be allocated to individuals (eg carry out work, QA tasks, independent checks)
- ▶ Highlights assigned Work steps that are not yet completed
- ▶ Work duration can be recorded for each step by each person
- ▶ Work steps can be kept as a template for repeat work, including the use of specific objects at individual steps
- ▶ Objects consumed during work steps automatically reduce held quantity
- ▶ Only objects that are available for use can be used during work (eg quarantined or out of date objects are not available for use)

View work as a summary of the required steps:

The screenshot shows a software interface titled "Project Workflow". At the top, there are fields for "Project" (empty), "Purpose" (Import Legacy data into SMART), "Status" (In Progress), "at" (20 Aug 2013 - 15:26), "by" (Mark Fleming), and "Show All". Below this is a table with columns: Step, Date/Time, Qty, Work Required, Assigned To, and Status.

Step	Date/Time	Qty	Work Required	Assigned To	Status
1	11 Mar 2013 - 16:22		import data from old db into new	Mark Fleming	Complete.
2	20 Aug 2013 - 15:13		Addition of new stores items	Mark Fleming	Complete.
3	20 Aug 2013 - 15:13		Addition of new stores items (general)	Mark Fleming	Complete.
4	20 Aug 2013 - 15:14		Import AMS legacy data into SMART	Mark Fleming	Complete.
5	20 Aug 2013 - 15:14		Import EMS legacy data into SMART	Mark Fleming	Pending

At the bottom of the interface, there are buttons for "Workflow Card", "Attach", "Show", "Notes", and "History".



...or as a detailed view of each activity along with who did the work, when and what objects were used or consumed at the time:

Activity	Date	User	Object Use	Qty	Duration
311	06-Aug-13	Billy Rolls	New stores Items added to stock	1	1
325	13-Aug-13	Billy Rolls	Additional checks for transfer of new version of SMART with AMS transfer.	1.5	1.5

## Tickets

The Tickets functionality enables users to track queries and issues

- ▶ Assign 'Tickets' to specific owners with task details, due date etc
- ▶ Ideal for tracking quality occurrences, customer queries

For more information and to arrange a SMART demonstration call us on 01343 842406 or email: [sales@copernicustechnology.com](mailto:sales@copernicustechnology.com)